

CHP XRGI 17D

Oil Energy Solution



PERFORMANCE

| | |
|---------------------------------------|-----------------------------------|
| Mechanical performance at 1535 r/min | 18.5 kW |
| Electrical efficiency – maximum | 5% +/- 1% (GCV) |
| Electrical output – maximum | 4 – 17 kW _e |
| Thermal output – maximum | 11 – 26 kW _t |
| Electrical efficiency by varying load | More than 33% by load >10 kW elec |
| Total efficiency | More than 85% by load >10 kW elec |
| Consumption at maximum load | 4.8 ltr/hr |

SYSTEM COMPONENTS

Cabinet

| | |
|---------------------------------------|------------------------|
| Double walls | 2 + 1.5 mm steel plate |
| External dimensions (H x W x D) | 1010 x 830 x 1190mm |
| Insulation | 50mm mineral wool |
| Maintenance access – surrounding unit | Minimum 600mm |
| Weight | 625kg |

Engine

| | |
|---------------------|-------------------------|
| Type | ECP modified Same-Deutz |
| Fuel | Diesel (EN590) |
| Cooling | Water cooled |
| Number of cylinders | 3 |
| Swept volume | 3000 cc |

Generator

| | |
|----------------|--------------|
| Operating type | Asynchronous |
| Cos φ | 0.8 |

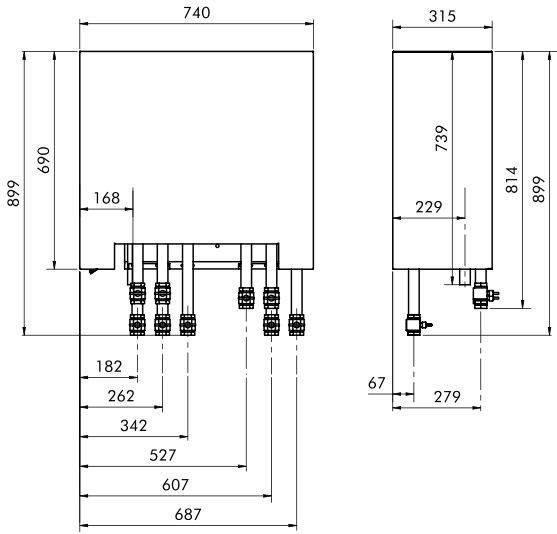
Heat Storage

| | |
|---|------------------------------|
| Thermal Store | Pre-insulated 475 ltr |
| External dimensions (H x B x D) | 700 x 700 x 1680mm (475 ltr) |
| Storage Capacity at 40°C return temperature | 17.3 kWh per 475 ltr vessel |

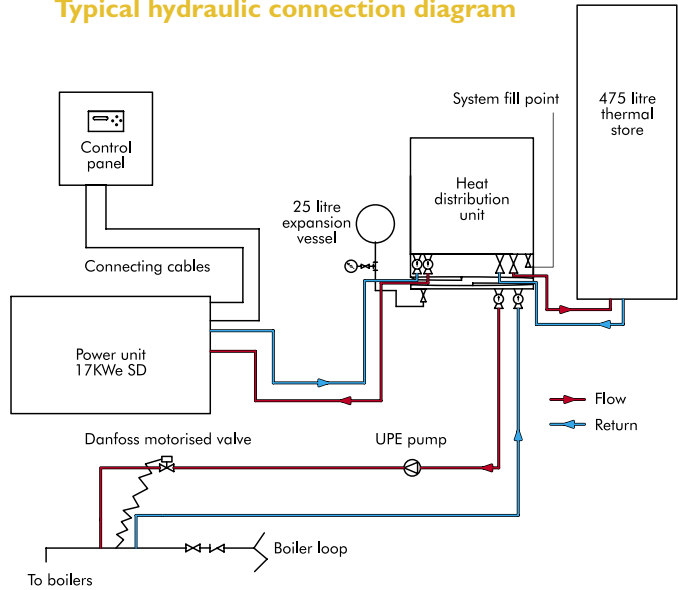
ELECTRICAL SYSTEM

| | |
|--------------------------------|---------------|
| Voltage | 3 phase, 400V |
| Maximum full load current, out | 3 x 30.7 A |
| Nominal generator current | 3 x 30.7 A |

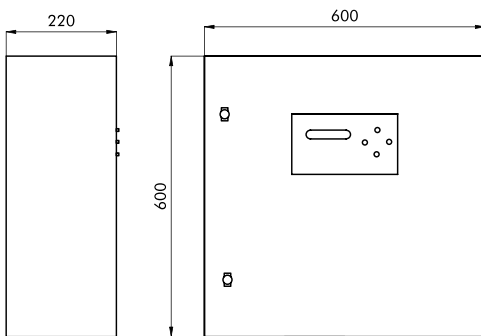
Heat distribution unit (wall mounted)



Typical hydraulic connection diagram

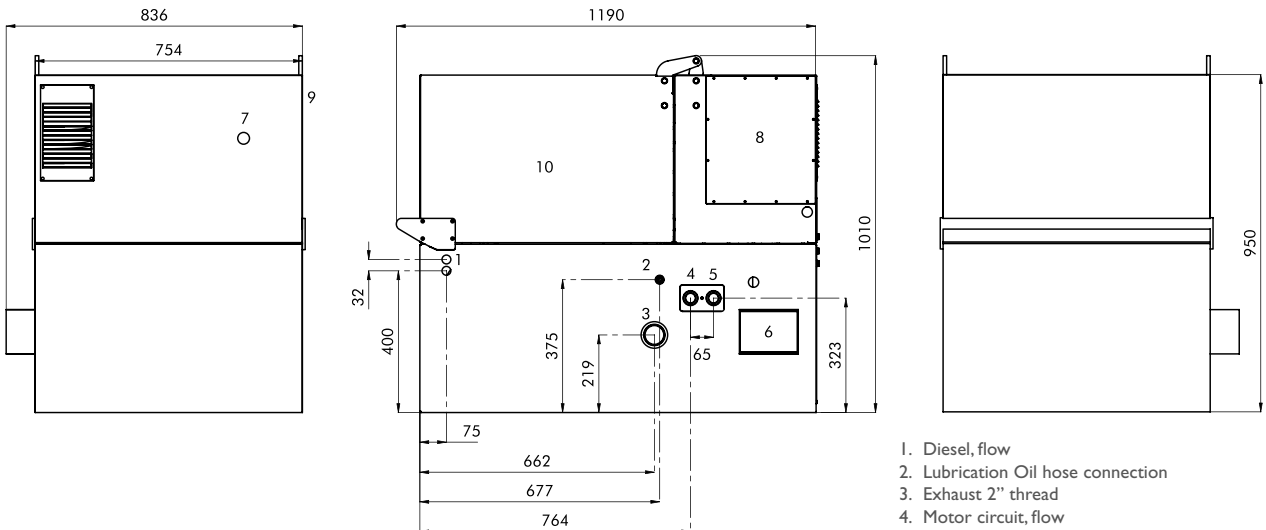


Control panel (wall mounted)



Component Dimensions (H x B x D mm)

| | |
|--|-------------------|
| Power unit | 1010 x 830 x 1190 |
| Power unit with lid raised | 1900 x 830 x 1190 |
| Wall mounted control panel | 600 x 600 x 220 |
| Wall mounted distribution unit | 899 x 740 x 220 |
| 475 litre hot water thermal store (standard) | 1680 x 700 x 700 |



1. Diesel, flow
2. Lubrication Oil hose connection
3. Exhaust 2" thread
4. Motor circuit, flow
5. Motor circuit, return
6. Power/production cable connection box
7. Control cable
8. Cover, air filter
9. Cover, cable connections
10. Cabinet door